

HealthWise MEMBERSHIP INFORMATION



● **HANFORD**
740 N IRWIN ST
HANFORD, CA 93230
PHONE: 559.272.9551



● **VISALIA**
4004 S DEMAREE ST #A
VISALIA, CA 93277
PHONE: 559.272.9549

HealthWise MEMBERSHIP INFORMATION

TABLE OF CONTENTS

Welcome to HealthWise Medical Clinic.....	Page 01
Who is HealthWise Medical Clinic.....	Page 02
What Services Does HealthWise Offer.....	Page 02
What Other Services Does HealthWise Offer.....	Page 03
What People are Saying.....	Page 04
Is My School District Covered.....	Page 05
5 Star Healthcare.....	Page 06
Quality of Care.....	Page 07
Frequently Asked Questions.....	Page 08
How Do I Contact HealthWise Medical Clinic.....	Page 09

● **HANFORD**
740 N IRWIN ST
HANFORD, CA 93230
PHONE: 559.272.9551



● **VISALIA**
4004 S DEMAREE ST #A
VISALIA, CA 93277
PHONE: 559.272.9549

HealthWise MEMBERSHIP INFORMATION

WELCOME TO HEALTHWISE MEDICAL

Thank you for joining HealthWise Medical. HealthWise Medical Clinics are free & accessible to people who are insured by SISC/SET-TC. HealthWise Medical Clinic operates in the counties of Kings & Tulare to help you and your insured dependents get the quality health care you deserve.

Member Handbook

This Member Handbook tells you about the services at HealthWise Medical Clinic. Please read it carefully and completely. It will help you understand more about your clinics. If you have any questions please feel free to contact us.

NOTICE OF DISCRIMINATION

Discrimination is against the law. HealthWise Medical Clinic follows state and federal civil rights laws. HealthWise Medical Clinic does not unlawfully discriminate, exclude people or treat them differently because of sex, race, color, religion, ancestry, national origin, ethnic group identification, age, mental disability, physical disability, medical condition, genetic information, marital status, gender, gender identity or sexual orientation.

If you believe that HealthWise Medical Clinic has unlawfully discriminated in another way on the basis of sex, race, color, religion, ancestry, national origin, ethnic group identification, age, mental disability, physical disability, medical condition, genetic information, marital status, gender, gender identity or sexual orientation, you can file a grievance with the corporate office. You can file a grievance in person, in writing, by phone, by email, or online:

Elite Corporate Medical Services Inc.
Address: 319 N Church Street, Visalia, CA 93291
Phone Number: 1-855.733.7772
Fax: 559.733.4596
Email: info@elitecorpmed.com
Online: www.healthwise.clinic

HealthWise MEMBERSHIP INFORMATION

WHO IS HEALTHWISE MEDICAL CLINIC?

HealthWise Medical Clinic truly is luxury medical care offering same-day appointments, no co-pays*, and comprehensive health care highly personalized to each individual. HealthWise also offers in-house lab draws and an in-house pharmacy with most common medications.

HealthWise is a 100% private family practice healthcare clinic.

When we say “private”, we mean that the clinic is exclusive to specific school districts and not open to the public. (Members Only)

When you are treated by our friendly staff you can be sure that your private health information will remain 100% secure & private.

**Some HSA Plans May Require A Small Fee For Visits*

WHAT SERVICES DOES HEALTHWISE OFFER?

Here are just some of the many services offered to you.

HealthWise can also provide referrals for specialized services.

ACUTE & EPISODIC MEDICAL CARE		
Abrasions	Depression & Anxiety	Nebulizer treatments
Acid Reflux	Dizziness/Fainting	Pneumonia
Allergies	Fever	Pregnancy test
Arthritis	Ear Infections	Rashes
Asthma	Gout	Shingles
Bites (Insect & Animal)	Infections	Strep culture
Bronchitis/Laryngitis	Injections	Sprains & Strains
Colds & Flu	Migraines	Urinary Tract Infections
Constipation & Diarrhea	Nausea & Vomiting	Viral Infections

ON-GOING CARE Diabetes COPD Hyperlipidemia Hypertension Thyroid Stress & Depression Blood Draws A1c Test	PREVENTION Flu Vaccination Heart Health Diabetes Prevention Risk Screenings Routine Physicals Yearly, Pap smear Sports Physicals Weight Management	PROCEDURES Drainage of abscess Wound Care Ear irrigation Laceration repair Removal of skin tags Skin biopsy Suture/staple removal Wart removal
---	---	---



**SCHEDULE AN
APPOINTMENT TODAY**

WWW.HEALTHWISE.CLINIC

HealthWise MEMBERSHIP INFORMATION

WHAT OTHER SERVICES ARE AVAILABLE?

WELLNESS COACHING

As a HealthWise Medical Clinic member you have free access to wellness coaching with our Weight & Health Clinic. Get one-on-one guidance and support from a dedicated wellness coach who can help you set goals, stick to them, and, most importantly, see results.

These services are also free to your insured spouses & dependents.

BENEFITS OF WELLNESS COACHING

- **PERSONALIZED**
Focus on what is most important and helpful to you.
- **UNLIMITED ACCESS**
No limit on number of coach visits.
- **NON-JUDGMENTAL**
Coaches accept and acknowledge wherever you are in your health journey.
- **QUALIFIED COACHES**
Work with coaches who have a minimum of a bachelor's degree in nutrition.

The Weight & Health Clinic offers in person, phone, or video call appointments.

DIABETES MANAGEMENT PROGRAM

Free to HealthWise members that are diagnosed with pre-diabetes or diabetes.

One-on-one dietary and lifestyle guidance related to diabetes and pre-diabetes management.

You could be eligible for waived co-pays on prescriptions for medications related to diabetes, blood pressure, and cholesterol.



WEIGHT & HEALTH CLINIC
Powered by: Elite Corporate Wellness

Ready to get started? Give us a call!

**559-5 HEALTH
(559-543-2584)**

HealthWise

MEMBERSHIP INFORMATION

WHAT PEOPLE ARE SAYING

Here are just a few of the hundreds of anonymous comments from members.

" I absolutely love this clinic. It is always clean, everyone is always friendly. We never have to wait, it is so amazing. I hope everyone takes advantage of this clinic if given the opportunity. "

"The staff and Doctors are always in great spirits. They make you feel welcome and take the time to hear and answer any questions you may have. In our Doctor's office (Hanford CA)my family and I are not just a number, and that means alot to us."

" I love it here! I always get seen quickly and can make appointments last minute. The staff is efficient and friendly. They offer many services here and have helped me with checking in regularly with my health. "

" I love this place! It's new, and the nurses and NPs are friendly. They offer so many different services and you're able to make appointments online. You have an amazing chance at getting an appointment last minute too. When you arrive, they're not usually busy so they get you in and out."

"Awesome experience, they were very informative and truly caring about my health. Provided a comfortable atmosphere. "

"The ladies in the office are the best !! You don't find office staff that take their duties seriously very often anymore it's nice to have that here at this office "

HealthWise MEMBERSHIP INFORMATION

IS MY DISTRICT COVERED?

HealthWise Medical Clinic serves several school districts in both Kings & Tulare County.

● TULARE COUNTY

Alta Vista Elementary
Burton Elementary
Columbine Elementary
Cutler-Orosi Joint Unified
Dinuba Unified
Ducor Union Elementary
Earlimart Elementary
Eleanor Roosevelt Community Learning Center
Exeter Unified
Farmersville Unified
Hope Elementary
Hot Springs Elementary
Kings River Union Elementary
Liberty Elementary
Lindsay Unified
Monson-Sultana Joint Union Elementary
Outside Creek Elementary
Pixley Union Elementary
Pleasant View Elementary
Rockford Elementary
Saucelito Elementary
Sequoia Union Elementary
Springville Union Elementary
Stone Corral
Strathmore Union Elementary
Sundale Union Elementary
Sunnyside Union Elementary
Terra Bella Union Elementary
The Academies Charter Management Organization
Three Rivers Union Elementary
Traver Joint Union Elementary
Tulare City Elementary
Valley Life Charter
Woodlake Unified
Woodville Elementary

● KINGS COUNTY

Central Union Elementary
Island Union Elementary
Kings County Office of Education
Kit Carson Union Elementary
Lakeside Union Elementary
Lemoore Union Elementary
Lemoore Union High
Pioneer Union Elementary



HealthWise MEMBERSHIP INFORMATION

EXEMPLARY HEALTHCARE ★★★★★

The friendly HealthWise Medical team enjoys providing the highest quality care to every patient and they will always greet you with a smile. Your visits will never be rushed and you will have as much time as you need with your provider. The providers at HealthWise Medical Clinic are known for taking the time to get to know each patient's health care needs. This enables them to provide you with exemplary care.

FREE SECOND OPINIONS

You might want a second opinion about care your provider says you need or about your diagnosis or treatment plan. For example, you may want a second opinion if you are not sure you need a prescribed treatment or surgery, or you have tried to follow a treatment plan and it has not worked.

If at any time you want to get a second opinion, you can be seen by another HealthWise Medical Clinic healthcare provider, no questions asked.

Notes:

HealthWise MEMBERSHIP INFORMATION

QUALITY PRIMARY CARE

HealthWise Medical Clinics have a unique business model. We do not bill insurance nor charge for visits*. We do not profit from having patients come back several times like most medical offices. If we ask you to come back for a follow up visit, you can be sure that it is because you are being provided with the highest quality care around.

Our health care providers can provide treatment based on what they think is best. Other health care providers often must treat patients based on what the insurance company will allow.

Our health care providers enjoy taking time with each patient and answer all their questions and making sure that they understand. Great treatment is never rushed.

A visit to a HealthWise Medical Clinic is often “all inclusive” since we offer in-house blood draws and several in-house medications. Minimizing additional trips to the lab or pharmacy after your appointment.

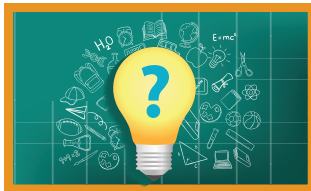
Our health care providers can also provide referrals to specialists and write prescriptions for any special medications we don't keep in stock at your personal clinic.

YOU ARE IN GREAT HANDS
HealthWise Medical Clinic



** for the sake of compliance, some hsa plans may have a small fee for visits*

HealthWise MEMBERSHIP INFORMATION



FREQUENTLY ASKED QUESTIONS

How much is the co-pay?

There are no co-pays except for some HSA plans which may have a small fee for visits.

Do I have to switch my primary care physician?

No. You do not have to switch your primary care physician. You can keep your primary care physician and still visit HealthWise Medical Clinic.

Does HealthWise provide blood draw services?

Yes. No more going to the lab and waiting to have your blood drawn, blood draws can be done during your visit to the HealthWise Medical Clinic.

Does HealthWise have a pharmacy?

Yes. HealthWise Medical Clinics carry a fresh stock of the most common medications. No more going to the pharmacy after leaving your appointment. Alternatively, your prescriptions can be sent to a local pharmacy.

Does HealthWise offer telephone appointments?

Yes. HealthWise offers telephone appointments for many types of appointments, including follow-up visits, prescription refills, and many other common appointment types.

Is HealthWise only open during the school year?

No. All HealthWise Medical Clinic locations are open year round, their hours are Monday through Friday 8:30AM to 5:30PM - Closed for lunch from 1 - 2.

Do you still have questions?

Feel free to give us a call, our friendly medical team would love to hear from you!

HealthWise MEMBERSHIP INFORMATION

HOW DO I CONTACT HEALTHWISE?

● **HANFORD**

740 N IRWIN ST
HANFORD, CA 93230
PHONE: 559.272.9551

SCAN FOR
APPOINTMENT



 Hanford

● **VISALIA**

4004 S DEMAREE ST #A
VISALIA, CA 93277
PHONE: 559.272.9549

SCAN FOR
APPOINTMENT



 Visalia

www.healthwise.clinic



HEALTHWISE MEDICAL CLINIC
Exclusive Healthcare for
District Members & Insured Dependents

Page 09